



# RESIDE

MANCHESTER



## A407 Castle Wharf 2a Chester Road

Castlefield, Manchester, M15 4SA

**£1,700 PCM**

This high specification apartment comes furnished and is situated on the 4th floor in Castle Wharf. A boutique waterside development overlooking the Castlefield basin. With two double bedrooms, two bathrooms and a spacious open plan living area/kitchen.

Overlooking the Castlefield basin. The historic canal tow path offers serene views for evening stroll's or for the more social, links to The Wharf, Dukes 92 & Alberts Shed. A stones throw away from Deansgate-Castlefield transport links, into the city-centre for some retail therapy.

The development includes state of the art facilities such as gymnasium, spa, residents' terrace, 24/7 concierge and much more. All included in the rent. Available 14th November.

### Viewing

Please contact our Reside Manchester Office on 0161 837 2840 if you wish to arrange a viewing appointment for this property or require further information.

- High Specification Apartment
- Two Double Bedrooms
- Two Bathrooms
- Furnished To A High Standard
- Available 14th November
- EPC Rating B
- Boutique Waterside Development
- Residents Spa & Gymnasium
- City Centre Location
- Concierge



2



2

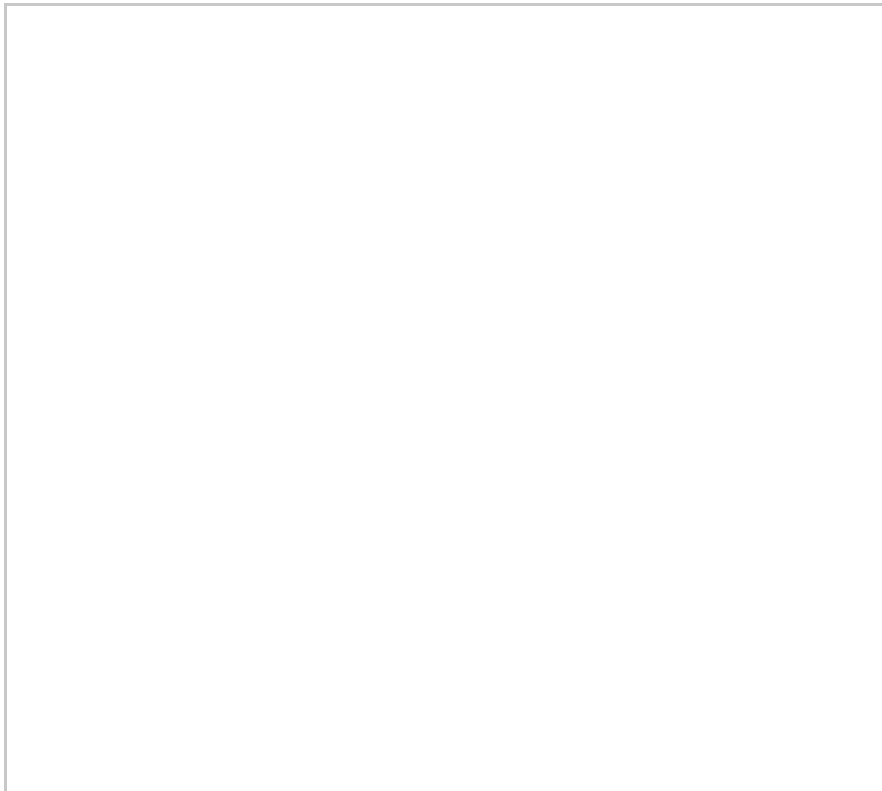


1



B

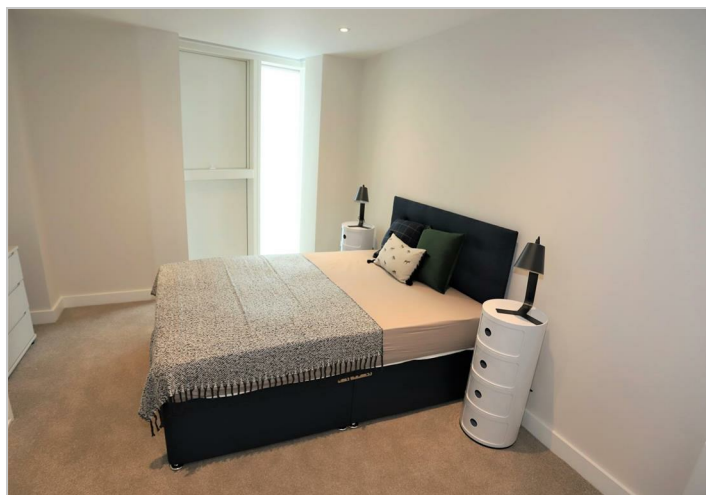
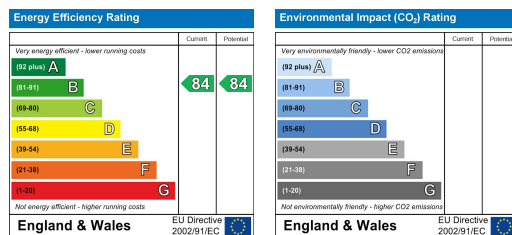
## Floor Plan



## Area Map



## Energy Efficiency Graph



These particulars, whilst believed to be accurate are set out as a general outline only for guidance and do not constitute any part of an offer or contract. Intending purchasers should not rely on them as statements of representation of fact, but must satisfy themselves by inspection or otherwise as to their accuracy. No person in this firms employment has the authority to make or give any representation or warranty in respect of the property.

249 Deansgate, Manchester, Greater Manchester, M3 4EN

Tel: 0161 837 2840 Email: [info@residemanchester.com](mailto:info@residemanchester.com)

[www.residemanchester.com](http://www.residemanchester.com)